

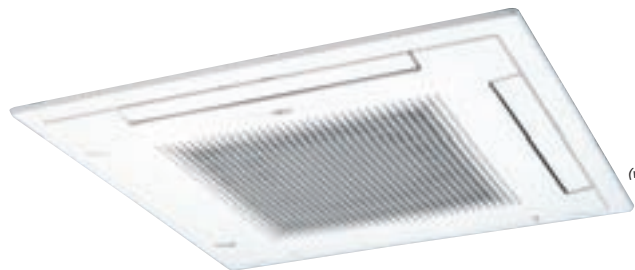
# INVERTER CASSETTE TYPE



**New Model** **AUY12L** **i PAM**  
 C—kW / —BTU/h  
 H—kW / —BTU/h

**New Model** **AUY14L** **i PAM**  
 C—kW / —BTU/h  
 H—kW / —BTU/h

**AUY18L** **i PAM**  
 C 4.70kW / 16,000BTU/h  
 H 4.80kW / 16,400BTU/h



Wired-Type (with weekly / Setback Timer) For AUY24L

For AUY24L

For AUY30/36L

For AUY45/54L



**AUY24L** **i PAM**  
 C 7.10kW / 24,200BTU/h  
 H 7.80kW / 26,600BTU/h

**AUY30L** **i PAM**  
 C 8.50kW / 29,000BTU/h  
 H 10.0kW / 34,100BTU/h

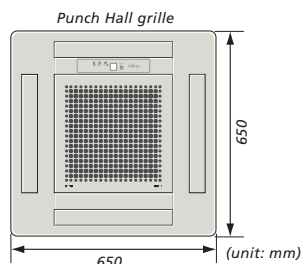
**AUY36L** **i PAM**  
 C 10.0kW / 34,100BTU/h  
 H 11.2kW / 38,200BTU/h

**AUY45L** **i PAM**  
 C 12.5kW / 42,700BTU/h  
 H 14.0kW / 47,800BTU/h

**New Model** **AUY54L** **i PAM**  
 C 13.3kW / 45,400BTU/h  
 H 16.0kW / 54,600BTU/h

## Compact size (AUY12/14/18L)

Compact grille fits European ceiling panel (650 x 650 mm).



## Easy maintenance (AUY24/30/36/45/54L)

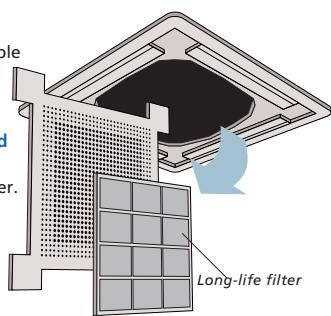
The control box is easily accessible for maintenance work. Wide opening for easy access.

**Detachable, washable filter and intake grille.**

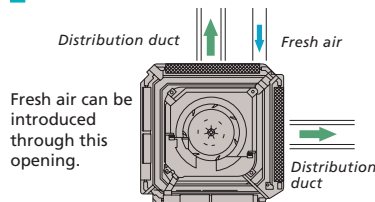
Wide opening and long-life filter.

**Long-life filter**

High efficiency, long-life filter extends the cleaning cycle.

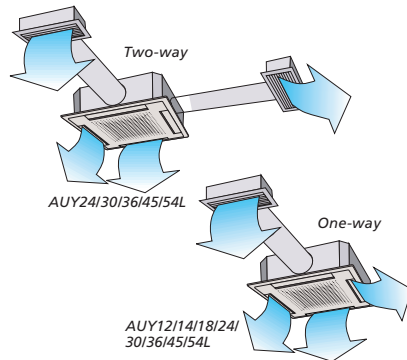


## Duct connection hole opening



Fresh air can be introduced through this opening.

**Conditioned air can be distributed by means of a distribution duct.**



## Condensate pump



Condensate pump lift to 400mm (AUY12/14/18L), 800mm (AUY24/30/36/45/54L)

## Pursuance of amenity performance (AUY24/30/36/45/54L)

Various remote controllers and sensors can be selected.

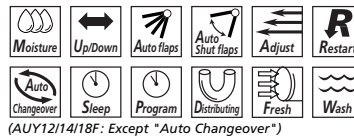
**Wired Remote Controller with Thermo Sensor**

- Room temperature sensor selection
- Temperature SET BACK timer
- Group control system
- Child lock
- Dual remote controllers <optional>
- Hot start <for heating>

## Specifications

		INVERTER CASSETTE TYPE									
Model No.	Indoor Unit	AUY12L	AUY14L	AUY18L	AUY24L	AUY30L	AUY36L	AUY45L	AUY54L		
Item	Outdoor Unit	AOY12L	AOY14L	AOY18L	AOY24L	AOY30L	AOY36L	AOY45L	AOY54L		
Rank		*	*	C / D	C / C	C / B	E / C	E / C	E / C		
Capacity	Cooling	kW	*	*	4.70	7.10	8.50	10.00	12.50	13.30	
		BTU/h	*	*	4.80	7.80	10.00	11.20	14.00	16.00	
	Heating	BTU/h	*	*	16,000	24,200	29,000	34,100	42,700	45,400	
		l/h	*	*	16,400	26,600	34,100	38,200	47,800	54,600	
Moisture Removal		*	*	2.0	2.0	3.0	4.0	4.5	5.0		
Room Air Circulation (High)	Inner	*	*	620	1,250	1,550	1,550	1,700	1,700		
	Outer	*	*	2,800	3,200	3,600	3,800	6,600	6,600		
Input Power		*	*	230/1/50	230/1/50	230/1/50	230/1/50	230/1/50	230/1/50		
Running Current	Cooling	A	*	*	7.20	11.10	12.50	17.60	19.50	23.80	
		Heating	*	*	7.50	10.50	12.40	15.20	17.30	21.60	
Power Consumption	Cooling	kW	*	*	1.65	2.53	2.86	4.01	4.45	5.45	
		Heating	*	*	1.71	2.40	2.84	3.49	3.95	4.95	
EER	Cooling	*	*	2.85	2.81	2.97	2.49	2.81	2.44		
COP	Heating	*	*	2.81	3.25	3.52	3.21	3.54	3.23		
Dimensions H x W x D	Inner	mm	235x580x(580+70)	235x580x(580+70)	235x580x(580+70)	246x830x830	296x830x830	296x830x830	296x830x830	296x830x830	296x830x830
		kg(lbs)	18(40)	18(40)	18(40)	34(75)	37(82)	37(82)	40(88)	40(88)	40(88)
		mm	650x830x320	650x830x320	650x830x320	650x830x320	830x900x330	830x900x330	830x900x330	1,290x900x330	1,290x900x330
Net Weight	Outer	kg(lbs)	54(119)	54(119)	54(119)	54(119)	64(141)	64(141)	105(231)	105(231)	105(231)
		mm	650x830x320	650x830x320	650x830x320	650x830x320	830x900x330	830x900x330	830x900x330	1,290x900x330	1,290x900x330
Connection Method		Flare	Flare	Flare	Flare	Flare	Flare	Flare	Flare		
Connection Pipe Size (Small/Large)	mm	6.35/9.52*	6.35/12.70	6.35/12.70	9.52/15.88	9.52/15.88	9.52/15.88	9.52/15.88	9.52/15.88	9.52/15.88	
Max Pipe Length /Height Difference	m	*	*	25(10)	25(10)	50(15)	50(15)	70(20)	70(20)	70(20)	
		*	*	15	15	30	30	30	30	30	
Permissible Range of Outdoor Temp.	Cooling	°C	*	*	0-43	0-43	-10-43	-10-43	-15-43	-15-43	
		Heating	*	*	-10-24	-10-24	-10-24	-10-24	-15-24	-15-24	
Refrigerant		R410A	R410A	R410A	R410A	R410A	R410A	R410A	R410A		
Grille		UTG-UDYD-W	UTG-UDYD-W	UTG-UDYD-W	-	-	-	-	-		

# CASSETTE TYPE



For AUY12F12U14F14U For AUY18F18U

**AUY12F**  
 C 3.60kW / 12,300BTU/h

**AUY14F**  
 C 4.10kW / 14,000BTU/h

**AUY18F**  
 C 5.00kW / 17,000BTU/h

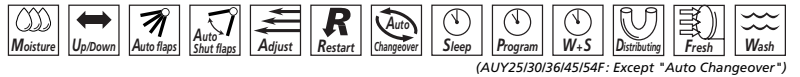
**AUY12U**  
 C 3.55kW / 12,100BTU/h  
 H 4.00kW / 13,700BTU/h

**AUY14U**  
 C 3.95kW / 13,500BTU/h  
 H 4.60kW / 15,700BTU/h

**AUY18U**  
 C 4.85kW / 16,600BTU/h  
 H 5.40kW / 18,400BTU/h



Wired-Type (with weekly / Setback Timer) For AUY25F25U25F3 For AUY30F30U For AUY36F45F36U/45U For AUY54F54U



(AUY25/30/36/45/54F: Except "Auto Changeover")

**AUY25F(3)**  
 C 7.05kW / 24,100BTU/h

**AUY25F**  
 C 7.05kW / 24,100BTU/h

**AUY30F**  
 C 8.40kW / 28,700BTU/h

**AUY36F**  
 C 10.50kW / 35,800BTU/h

**AUY45F**  
 C 12.70kW / 43,400BTU/h

**AUY54F**  
 C 14.50kW / 49,500BTU/h

**AUY25U**  
 C 7.00kW / 23,900BTU/h  
 H 7.80kW / 26,600BTU/h

**AUY30U**  
 C 8.40kW / 28,700BTU/h  
 H 9.50kW / 32,400BTU/h

**AUY36U**  
 C 10.50kW / 35,800BTU/h  
 H 11.80kW / 40,300BTU/h

**AUY45U**  
 C 12.70kW / 43,400BTU/h  
 H 14.30kW / 48,800BTU/h

**AUY54U**  
 C 14.50kW / 49,500BTU/h  
 H 16.50kW / 56,300BTU/h

## Specifications

Model No.		CASSETTE TYPE							
Item	Indoor Unit	AUY12F	AUY12U	AUY14F	AUY14U	AUY18F	AUY18U	AUY25F	AUY25U
	Outdoor Unit	AOY12F	AOY12U	AOY14F	AOY14U	AOY18F	AOY18U	AOY25F	AOY25U
Rank		C	C / C	C	C / B	D	D / E	D	D / C
Capacity	Cooling	kW	3.60	3.55	4.10	3.95	5.00	4.85	7.05
		BTU/h	12,300	12,100	14,000	13,500	17,000	16,600	24,100
	Heating	kW	-	4.00	-	4.60	-	5.40	-
		BTU/h	-	13,700	-	15,700	-	18,400	-
Moisture Removal	l/h	1.3	1.3	1.5	1.5	2.1	2.1	2.5	
Room Air Circulation (High)	Inner	550	550	550	550	620	620	1,100	
	Outer	1,600	1,600	1,600	1,600	3,400	3,200	3,200	
Input Power	V/o/Hz	230/1/50	230/1/50	230/1/50	230/1/50	230/1/50	230/1/50	230/1/50	
Running Current	Cooling	A	5.50	5.50	6.30	6.30	8.50	8.20	11.50
		Heating	-	5.40	-	6.30	-	9.20	-
Power Consumption	Cooling	kW	1.24	1.24	1.39	1.40	1.90	1.85	2.60
		Heating	-	1.21	-	1.42	-	2.00	-
EER	Cooling	2.90	2.86	2.95	2.82	2.63	2.62	2.71	
COP	Heating	-	3.31	-	3.24	-	2.70	-	
Dimensions H x W x D	Inner	mm	235x580x(580+70)	235x580x(580+70)	235x580x(580+70)	235x580x(580+70)	235x580x(580+70)	246x830x830	246x830x830
		kg(lbs)	18(40)	18(40)	18(40)	18(40)	18(40)	34(75)	34(75)
Net Weight	Outer	mm	530x750x250	530x750x250	530x750x250	530x750x250	650x830x320	650x830x320	650x830x320
		kg(lbs)	34(75)	34(75)	35(77)	35(77)	47(103)	52(114)	58(128)
Connection Method		Flare	Flare	Flare	Flare	Flare	Flare	Flare	
Connection Pipe Size (Small/Large)	mm	6.35/9.52	6.35/9.52	6.35/12.70	6.35/12.70	6.35/12.70	6.35/12.70	9.52/15.88	
Max Pipe Length /Height Difference	m	20	20	20	20	20	20	25	
		8	8	8	8	8	8	15	
Permissible Range of Outdoor Temp.	Cooling	°C	21~43	0~43	21~43	0~43	0~43	0~43	0~43
		Heating	-	-7~24	-	-7~24	-	-7~24	-
Refrigerant		R410A	R410A	R410A	R410A	R410A	R410A	R410A	
Grille		UTG-UDYD-W	UTG-UDYD-W	UTG-UDYD-W	UTG-UDYD-W	UTG-UDYD-W	UTG-UDYD-W	-	

## CASSETTE TYPE

AUY25F(3)	AUY30F	AUY30U	AUY36F	AUY36U	AUY45F	AUY45U	AUY54F	AUY54U
AOY25F(3)	AOY30F	AOY30U	AOY36F	AOY36U	AOY45F	AOY45U	AOY54F	AOY54U
C	C	C / B	C	B / C	C	C / C	C	C / D
7.05	8.40	8.40	10.50	10.50	12.70	12.70	14.50	14.50
-	-	9.50	-	11.80	-	14.30	-	16.50
24,100	28,700	28,700	35,800	35,800	43,400	43,400	49,500	49,500
-	-	32,400	-	40,300	-	48,800	-	56,300
2.5	3.0	3.0	4.0	4.0	5.0	5.0	6.0	6.0
1,100	1,250	1,250	1,500	1,500	1,550	1,550	1,700	1,700
3,200	3,300	3,300	7,000	6,100	6,100	6,100	6,300	6,300
400/3/50	230/1/50	230/1/50	400/3/50	400/3/50	400/3/50	400/3/50	400/3/50	400/3/50
4.90	13.60	13.60	6.20	5.90	7.70	7.70	9.50	9.50
-	-	13.10	-	6.20	-	7.70	-	9.50
2.40	2.95	2.95	3.74	3.48	4.38	4.38	5.16	5.16
-	-	2.78	-	3.65	-	4.39	-	5.30
2.94	2.85	2.85	2.81	3.02	2.90	2.90	2.81	2.81
-	-	3.42	-	3.23	-	3.26	-	3.11
246x830x830	246x830x830	246x830x830	296x830x830	296x830x830	296x830x830	296x830x830	296x830x830	296x830x830
34(75)	34(75)	34(75)	37(81)	37(81)	40(88)	40(88)	40(88)	40(88)
650x830x320	830x900x330	830x900x330	1,165x900x330	1,165x900x330	1,165x900x330	1,165x900x330	1,290x900x330	1,290x900x330
56(123)	68(150)	69(152)	80(176)	94(207)	109(240)	113(249)	114(251)	118(260)
Flare	Flare	Flare	Flare	Flare	Flare	Flare	Flare	Flare
9.52/15.88	9.52/15.88	9.52/15.88	9.52/15.88	9.52/15.88	9.52/19.05	9.52/19.05	9.52/19.05	9.52/19.05
25	30	30	50	50	50	50	50	50
15	15	15	30	30	30	30	30	30
0~43	0~43	0~43	0~43	0~43	0~43	0~43	0~43	0~43
-	-	-7~24	-	-10~24	-	-10~24	-	-10~24
R410A	R410A	R410A	R410A	R410A	R410A	R410A	R410A	R410A
-	-	-	-	-	-	-	-	-